

The logo for CRCHUM, with 'CR' in green and 'CHUM' in blue.

CRCHUM

CENTRE DE RECHERCHE

Centre hospitalier
de l'Université de Montréal

A low-angle photograph of a modern, multi-story building with a glass and metal facade. The building is the CRCHUM (Centre de recherche en santé et services sociaux de l'Université de Montréal). The sky is blue with some clouds. In the foreground, there is a large, abstract sculpture made of silver metal bands. The entrance of the building is visible at the bottom, with the number '900' above the glass doors. A blue sign with a white 'R' is also visible near the entrance.

DARE TO LOOK BEYOND THE HORIZON

HIGHLIGHTS 2015

WHO ARE WE?

THE CHUM RESEARCH CENTRE (CRCHUM) IS ONE OF THE LARGEST HOSPITAL-BASED RESEARCH CENTRES IN NORTH AMERICA.

BETTER HEALTH FOR EVERYONE

Our mission is to improve adult health by means of a research continuum that encompasses basic, clinical and population health research.

AN INTEGRATED APPROACH

This holistic approach is a major asset in transforming scientific knowledge into tangible benefits for patients and populations.

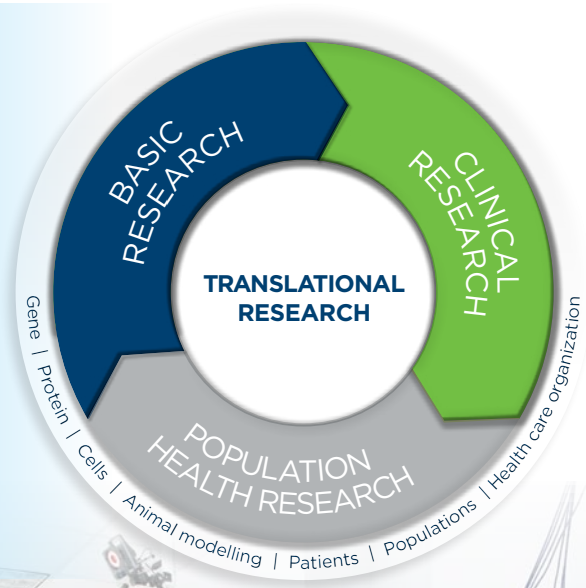


PHOTO CREDITS: PRODUCTION MULTIMÉDIA CHUM, COSMOS IMAGE

1953

RESEARCH PIONEERS

More than 1950 people work at the CRCHUM. They all contribute to improving health care by finding practical solutions to health issues.

439

scientists

435

graduate students
and postdoctoral
fellows

277

other students
and research
trainees

852

professionals,
support staff,
technicians and
research nurses

THE CRCHUM IS ALSO...

A modern
48,000 m²
building

15
beds for
early-phase
clinical research

A cyclotron
A specialized
pharmacy

\$64.9
million in research
and operating revenues
in 2014-2015

75
basic research
laboratories

33
clinical examination
rooms

900
scientific articles
published every year

A stimulating
environment
to train a new
generation of
dedicated researchers



CUTTING-EDGE FACILITIES

INAUGURATED IN OCTOBER 2013,
THE NEW CHUM RESEARCH CENTRE IS EQUIPPED
WITH STATE-OF-THE-ART TECHNOLOGY.

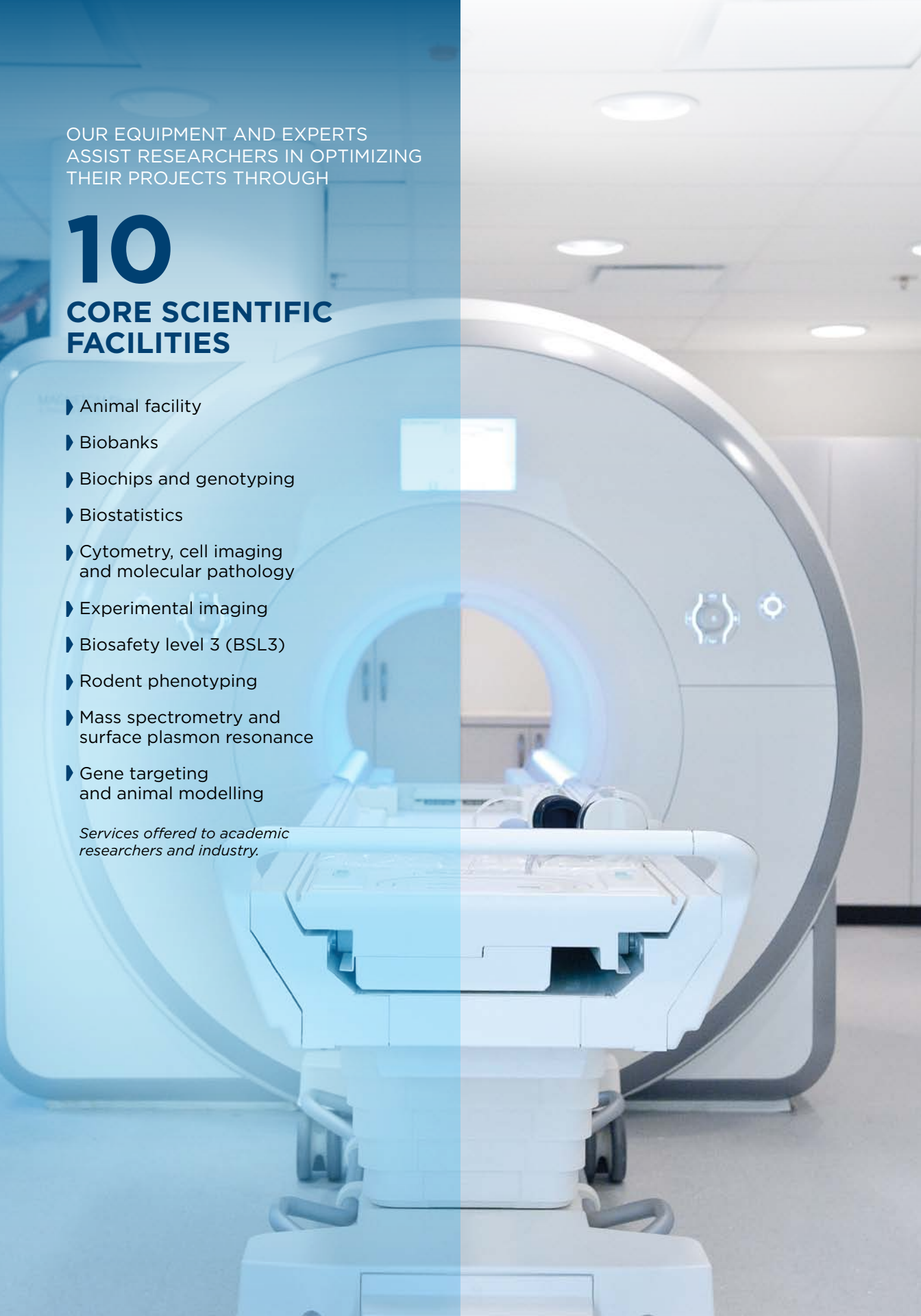
OUR EQUIPMENT AND EXPERTS ASSIST RESEARCHERS IN OPTIMIZING THEIR PROJECTS THROUGH

10

CORE SCIENTIFIC FACILITIES

- ▶ Animal facility
- ▶ Biobanks
- ▶ Biochips and genotyping
- ▶ Biostatistics
- ▶ Cytometry, cell imaging and molecular pathology
- ▶ Experimental imaging
- ▶ Biosafety level 3 (BSL3)
- ▶ Rodent phenotyping
- ▶ Mass spectrometry and surface plasmon resonance
- ▶ Gene targeting and animal modelling

Services offered to academic researchers and industry.





A RICH SCIENTIFIC ENVIRONMENT

More than **250 SEMINARS, THESIS DEFENCES** and **LECTURES** are presented at the CRCHUM every year.

The **CRCHUM LECTURES** showcase the work of internationally renowned researchers.

Presided over by a Nobel Laureate, the annual **SCIENTIFIC DAY** is dedicated to sharing and reflecting on biomedical and health advances.

8 AREAS OF EXPERTISE...

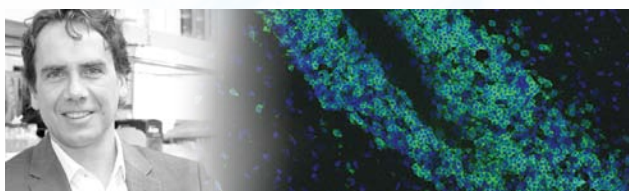
THE CRCHUM FOCUSES ITS RESEARCH ON 8 RESEARCH THEMES THAT CORRESPOND TO THE CHUM'S PRIORITIES:

- ▶ Cancer
- ▶ Tissue injury, infection, immunity and inflammation
- ▶ Neuroscience
- ▶ Global health
- ▶ Cardiometabolic diseases
- ▶ Risks to health
- ▶ Evaluation, care systems and services
- ▶ Imaging and engineering

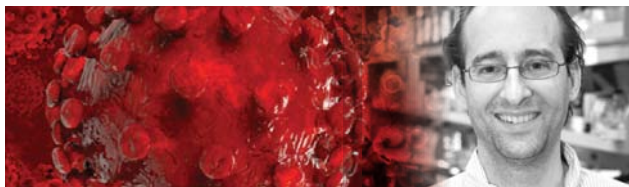


FROM THE LAB TO THE PUBLIC:

SOME DISCOVERIES TO IMPROVE HEALTH



In Dr. Alexandre Prat's laboratory, discovery of a treatment to block the progression of **multiple sclerosis**.



Andrés Finzi's team unveils a mechanism that forces the **human immunodeficiency virus (HIV)** to expose its vulnerable parts.



Virtual nurses help patients live with chronic diseases such as HIV/AIDS or cancer through TAVIE, a virtual tool developed by José Côté's team.



Reduce the damage caused by **heart attacks**: Dr. Nicolas Noiseux's team is on the trail of a promising compound.



A revolutionary probe developed by Frédéric Leblond detects **cancer cells in the brain**.



LE
GRAND LABO
DU CRCHUM

GIVING TO FOSTER RESEARCH

CONTRIBUTING TO THE ADVANCEMENT
OF RESEARCH IS OUR COLLECTIVE RESPONSIBILITY

The **CRCHUM Challenge** is a charitable sports event to fund training awards for staff and students. Over **\$100,000** was raised in 2015.

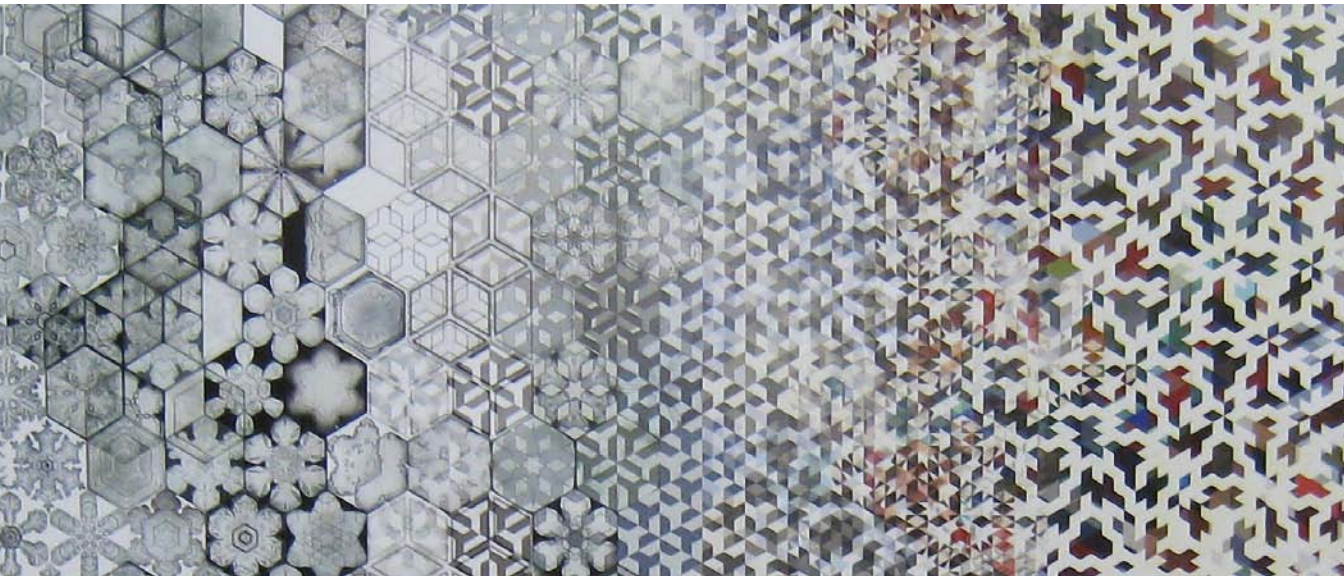
A prestigious fundraising gala that highlights our researchers' talents, the *Grand Labo du CRCHUM* raises funds for research.

Since 2010, the event has raised over **\$3** million in support of health research.

DARE TO LOOK BEYOND THE HORIZON

WHERE NOVEL IDEAS LEAD TO

- ▶ Discoveries of new drugs
- ▶ Disease prevention
- ▶ Health improvements for everyone



© TESSELLATIONS SANS FIN, ALAIN PAIEMENT

CRCHUM

CENTRE DE RECHERCHE
Centre hospitalier
de l'Université de Montréal

Université 
de Montréal

Pavillon R
900 Saint Denis Street
Montréal, Québec H2X 0A9
Canada

www.crchum.com
info.crchum@ssss.gouv.qc.ca